

Support

[Submit Ticket](#)

[My Support Requests](#)

[Logout](#)

[Customer Support](#) > [Nik Collection by DxO](#) > [Color Efex Pro](#)

Filters

B/W Conversion



Before



After

Use this filter to transform a color image into a black and white version, with control over the shadows, highlights, and relationships among the original colors. Three different black and white conversion methods are available within this filter, each providing different control over the contrast added to the image: B/W Conversion, Tonal Enhancer, and Dynamic Contrast.

Filter Settings Panel Description

Filter Color:

Adjusts the color of the simulated filter and controls the relationship of colors in the image. This lightens objects of that color in the image and darkens objects of the complementary color.

Strength:

Slide to the left for less contrast between colors, to the right for more contrast between colors.

Brightness:

Controls the overall lightness of the image.

Contrast:

Controls the overall contrast of the image.

Method:

Provides three options with different types of contrast to help bring out shadow detail or create a high contrast image.

Image by Stephanie Studer on Unsplash

Bi-Color Filter



Before



After

Simulates a traditional glass bi-color filter by blending two colors and then adding the result to the image. From the pull-down menu select a pre-defined color combination, each with four variations.

Filter Settings Panel Description

Color Set:

Select one of 16 pre-set color combinations, grouped into four different color sets.

Opacity:

Controls the overall strength of the filter.

Blend:

Controls the transition between the two colors.

Vertical Shift:

Controls the placement of the filter's horizon.

Rotation:

Controls the angle of the filter's horizon.

Image by Sweet Ice Cream Photography on Unsplash

Bi-Color User Defined



Before



After

Simulates a traditional glass bi-color filter by blending two colors and then adding the result to the image, with the ability to custom-define both colors.

Filter Settings Panel Description

Upper Color:

Specifies the top color to be applied to the image. Use either the eyedropper to select a color from the current image or click on the color patch to access the color picker.

Lower Color:

Specifies the bottom color to be applied to the image. Use either the eyedropper to select a color from the current image or click on the color patch to access the color picker.

Opacity:

Controls the overall strength of the filter.

Blend:

Controls the transition between the two colors.

Vertical Shift:

Controls the placement of the filter's horizon.

Rotation:

Controls the angle of the filter's horizon.

Image by Laszlo Kiss on Unsplash

Bleach Bypass



Before



After

Simulates the technique used with color film in which the bleach step is skipped, resulting in a high contrast, low saturation effect. This look has been used by both still photographers and motion film makers to create stylized and impactful images.

Filter Settings Panel Description

Brightness:

Controls the overall lightness of the image.

Saturation:

Controls the overall vibrancy of colors by increasing or decreasing saturation throughout the image.

Global Contrast:

Controls the overall contrast of the image.

Local Contrast:

Utilizes a specially tuned variation of the Structure control found in other Nik Software products to accentuate fine details and textures within the image.

Image by Désirée Fawn on Unsplash

Brilliance/Warmth



Before



After

Provides control over the vibrancy of color within your photo, with the ability to make the image cooler or warmer.

Filter Settings Panel Description

Saturation:

Increase or decreases the saturation of colors through your photo.

Warmth:

Controls the temperature of the colors in your photo. Move the slider to the left to cool the colors (adding blues), or to the right to warm the colors (adding reds).

Perceptual Saturation:

While not increasing the saturation of colors directly, this slider alters the hues of colors slightly to increase the perception of the saturation of those colors. This is done by increasing the complementary color component in surrounding colors, which plays off of the brain's perception of colors in much the same way that perceptual contrast works, where an image appears to have more contrast when placed on a black background.

Image by Daniel Frank on Unsplash

Classical Soft Focus



Before



After

This filter simulates traditional soft focus filters and diffusion techniques.

Filter Settings Panel Description

Method:

Provides three different options each for soft focus and diffusion effects.

Diffused Detail:

Controls the amount of random detail added to the soft focus effect. This can help maintain the appearance of detail and prevent banding.

Strength:

Controls the amount of softening adding to your photo.

Brightness:

Controls the overall lightness of your photo.

Image by Drew Coffman on Unsplash

Color Stylizer



Before



After

Overlays a color on top of your photo and lets you control the saturation of the original's colors.

Filter Settings Panel Description

Color:

Enables you to select which color to add to the image. Use either the eyedropper to select a color from within your photo or click on the color patch to access the color picker.

Contrast:

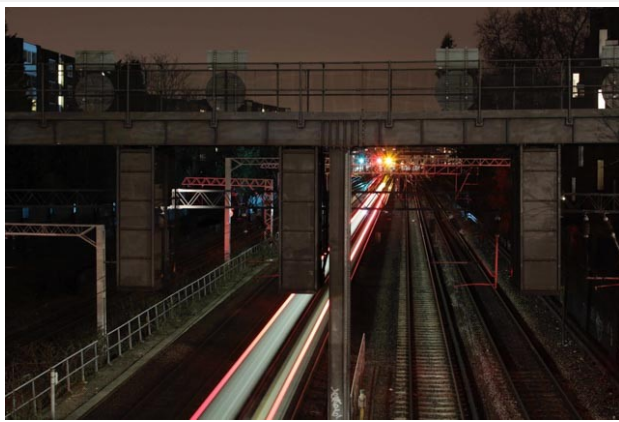
Controls the overall contrast of your photo.

Saturation:

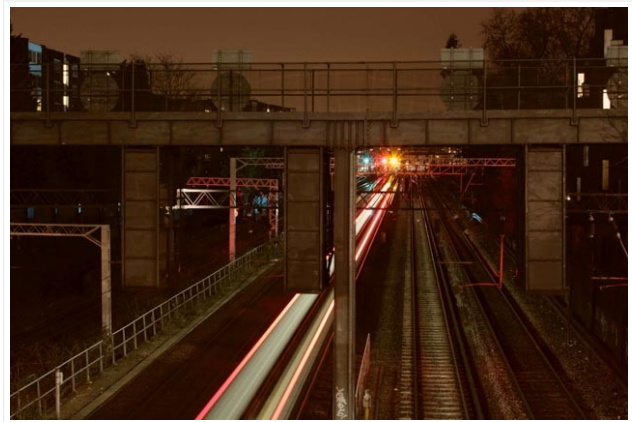
Controls the amount of color to include from the original. Slide to the left to create a monochrome image, or to the right to maintain the full amount of color from the original.

Image by Duncan Shaffer on Unsplash

Colorize



Before



After

Inks the image with a color and provides different color and contrast relationships to stylize the image.

Filter Settings Panel Description

Method:

Provides six different options for how the color is applied to the image.

Color:

Enables you to select which color to add to the image. Use either the eyedropper to

select a color from within your photo or click on the color patch to access the color picker.

Strength:

Controls the degree to which the filter is applied to your photo.

Image by Jess D'Arcy on Unsplash

Contrast Color Range



Before



After

Provides control over the contrast between selected colors within an image.

Filter Settings Panel Description

Color:

Selects the color range to which to apply contrast. The color selected will cause objects of that color to become lighter, while opposite colors will become darker.

Color Contrast:

Controls the amount of contrast to add between the selected color, and that color's complement.

Brightness: Controls the overall lightness of your photo.

Contrast: Controls the overall contrast of your photo.

Image by Pineapple Supply Co. on Unsplash

Contrast Only



Before



After

This filter provides a range of different contrast controls, including the Contrast Only method which adjusts contrast without affecting the color of objects throughout your photo.

Filter Settings Panel Description

Brightness: Controls the overall contrast in your photo.

Contrast: Applies a standard contrast routine to your images, similar to the contrast provided within your image editing application.

Contrast Only: Applies a unique contrast designed to affect only the contrast in your photo, preventing colors from being affected.

Soft Contrast:

Provides a different approach to contrast, one that can be less harsh than the effect of traditional contrast. Move this slider to the right to introduce a moody contrast with soft transitions between areas.

Saturation:

Controls the overall vibrancy of colors within your photo.

Image by Slim Emcee (UG) the poet Truth_From_Africa_Photo on Unsplash

Cross Balance



Before



After

Simulates the look of shooting either tungsten-balanced film in daylight or daylight-balanced film under tungsten lights. Use this filter to create the cool blue or warm orange effect to stylize your photos.

Filter Settings Panel Description

Method:

Select one of the three options available for either a Daylight to Tungsten effect or a Tungsten to Daylight effect. Each option

provides a stronger effect than the previous option.

Strength:

Controls the degree to which the filter is applied to your photo.

Image by Jase Daniels on Unsplash

Cross Processing



Before



After

Provides a variety of different options for both C41 to E6 processing (the processing of color negative film in slide film chemistry) and E6 to C41 processing (the processing of slide film in color negative film chemistry).

Filter Settings Panel Description

Method:

Use this pull-down menu to select from one of the pre-defined processing methods.

Strength:

Controls the degree to which the filter is applied to your photo.

Image by Linford Miles on Unsplash

Dark Contrasts



Before



After

Utilizes a new and unique technique to exaggerate details and textures throughout your photo while creating a dark, moody end result.

Filter Settings Panel Description

Detail Extractor:

Controls the extent to which details are accentuated from the image. Increasing this slider will exaggerate details while brightening shadows and toning down highlights, resulting in a more balanced distribution of tonality throughout your photo.

Brightness:

Controls the overall lightness of your photo.

Contrast:

Controls the overall contrast of your photo.

Saturation:

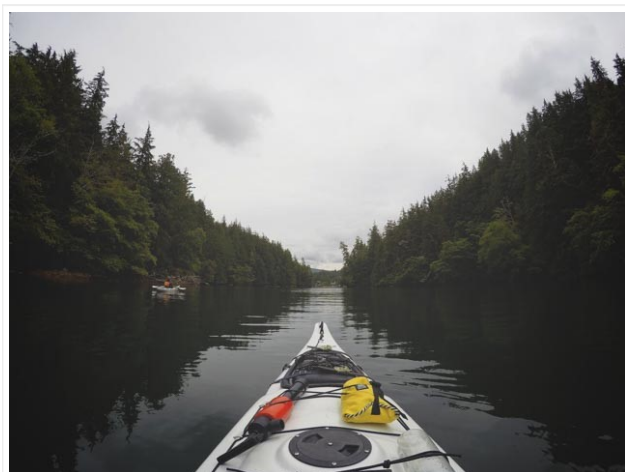
Controls the vibrancy of colors throughout your photo.

Image by Kazuend on Unsplash

Darken/Lighten Center



Before



After

Draws the eye toward or away from the center of your photo. A lighter center and darker edges draw the eye to the center of the image, while a darker center and lighter edges draw the eye to the edges.

Filter Settings Panel Description

Method:

Controls the shape of the effect. Select between a round shape and an ovoid shape.

Center Luminosity:

Controls the brightness at the center of your photo.

Border Luminosity:

Controls the brightness at the edges of your photo.

Center Size:

Controls the size of the effect.

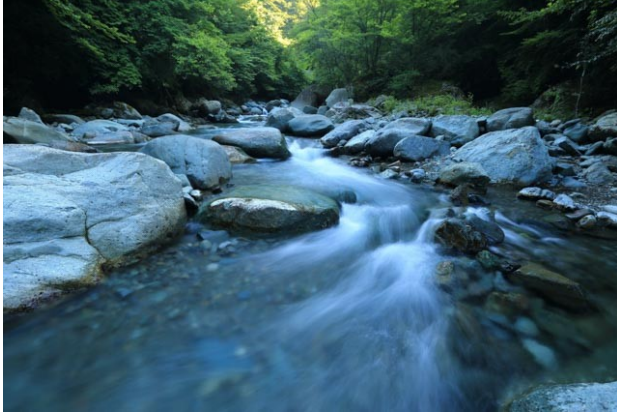
Place Center:

Click on the Place Center icon and then click on the area in your photo that you want to

use as the center for the effect.

Image by Laura Lefurgey-Smith on Unsplash

Detail Extractor



Before



After

Utilizes a new and unique technique to exaggerate details to create unique and stylized photos. Use this filter to balance light and tonality and extract details from every corner of your photo.

Filter Settings Panel Description

Detail Extractor:

The main control in the filter, increasing this slider lightens shadows and darkens highlights while exaggerating details throughout your photo.

Contrast:

Controls the overall contrast in your photo.

Saturation:

Controls the overall vibrancy of colors in your photo.

Effect Radius:

Controls how the Detail Extractor control brings out details. Selecting the Fine option

will focus on smaller objects, creating more texture, while Large works on larger objects only.

Image by Kazuend on Unsplash

Duplex



Before



After

Creates a stylistic, duotone effect with options for color, blur, and saturation.

Filter Settings Panel Description

Color:

Adds a color to the image. To select a color for this control, use the eyedropper to select a color from your photo or click on the color patch to access the color picker.

Strength:

Controls the degree to which the filter is applied to your photo.

Diffusion:

Controls the amount of blur added for a

stylistic effect.

Saturation:

Controls the vibrancy of colors through your photo.

Contrast:

Controls the overall contrast in your photo.

Image by Igor Ovsyannykov on Unsplash

Dynamic Skin Softener



Before



After

Creates soft, lustrous skin, without affecting other objects in the image. This filter can even be used on photos that don't contain people to take advantage of the unique softening effect on other objects.

Filter Settings Panel Description

Skin Color:

Select the color of the skin tone using either the eyedropper to select a color from within your photo or by clicking on the color patch to access the color picker.

Color Reach:

Controls the range of affected colors. Slide to

the left to narrow the range of affected colors or to the right to expand the range. A value of 100% causes the softening effect to be applied to all colors and objects throughout your entire photo.

Small Details:

Controls the amount of softening applied to small details in your photo.

Medium Details:

Controls the amount of softening applied to medium details in your photo.

Large Details:

Controls the amount of softening applied to large details in your photo.

Film Efex: Faded



Before



After

The Faded filter of the Film Efex series provides a unique stylistic effect, simulating old, poorly handled prints.

Filter Settings Panel Description

Brightness:	Controls the overall brightness of your photo.
Contrast:	Controls the overall contrast of your photo.
Saturation:	Controls the vibrancy of colors within your photo.
Haze:	Adds a diffusion effect to your image, reducing contrast and softening details.
Vignette:	Provides the ability to darken the edges of the image, in a circular shape.
Grain per pixel:	Based off of the unique Nik Software Grain Engine, this slider lets you add realistic grain into your photo. Move the slider to the left, decreasing the number of grain elements applied per pixel, to increase the size and visibility of grain throughout your photo. To prevent any grain from being applied to your photo, move the slider completely to the right.
Film Strength:	Controls the strength of the unique film stylization applied. To keep the original colors of your photo, move this slider to 0%.
Film Type:	Select from a range of different film types, each designed to create a different look and feeling in your photo.

Image by Sweet Ice Cream Photography on Unsplash

Film Efex: Modern



Before



After

The Modern filter of the Film Efex series lets you emulate the look of current color negative films still available. Use this slider to get the look and feel, including the grain, of color film. Using the advanced sliders in the Film Details section, you can even create your own film types to achieve imagined and never-before-seen films.

Filter Settings Panel Description

Film Type:

Select from one of the available films. For each film, multiple rolls were shot, scanned, and analyzed to create as true a film emulation as possible.

Brightness:

Controls the overall brightness of your photo.

Contrast:

Controls the overall contrast of your photo.

Sensitivity:

Found in the Film Details section, each slider enables you to control the brightness of that particular color found in your photo.

Saturation:

Found in the Film Details section, each slider enables you to control the vibrancy of that specific color found in your photo.

Tone Curve:

Found in the Film Details section, this tool provides you the ability to control the contrast of your film type, with control over the tonality and contrast of red, green, and blue separately.

Grain:

Found in the Film Details section, these sliders enable you to add realistic grain to your photo using the unique Nik Software Grain Engine. Move the Grain per pixel slider to the left, decreasing the number of grain elements applied per pixel, to increase the size and visibility of grain throughout your photo. To prevent any grain from being applied to your photo, move the Grain per pixel slider completely to the right. The Grain Softness slider enables you to control how hard or soft the grain appears, with harder grain providing a feeling of more detail or sharpness and softer grain providing a more natural film feeling.

Image by Rob Bye on Unsplash

Film Efex: Nostalgic



Before



After

The Nostalgic filter from the Film Efex series creates effects based on imagined film types. Use this filter to create special and interesting renditions of your photo, with vibrant colors, and the feeling of having been captured by a toy camera.

Filter Settings Panel Description

Brightness:

Controls the overall brightness of your photo.

Perceptual Saturation:

While not increasing the saturation of colors directly, this slider alters the hues of colors slightly to increase the perception of the saturation of those colors. This is done by increasing the complementary color component in surrounding colors, which plays off of the brain's perception of colors in much the same way that perceptual contrast works, where an image appears to have more contrast when placed on a black background.

Glow: Adds a small amount of glow around bright objects.

Vignette: Provides the ability to darken the edges of the image, in a circular shape.

Grain per pixel: Based off of the unique Nik Grain Engine, this slider lets you add realistic grain into your photo. Move the slider to the left, decreasing the number of grain elements applied per pixel, to increase the size and visibility of grain throughout your photo. To prevent any grain from being applied to your photo, move the slider completely to the right.

Film Strength: Controls the strength of the unique film stylization applied. To keep the original colors of your photo, move this slider to 0%.

Film Type: Select from a range of different film types, each designed to create a different look and feeling in your photo.

Image by Ingo Hamm on Unsplash

Film Efex: Vintage



Before



After

The Vintage filter from the Film Efex series creates photos that appear to be made from the first types of color films.

Filter Settings Panel Description

Saturation:

Controls the overall vibrancy of colors in your photo.

Warmth:

Controls the temperature of the colors in your photo. Move the slider to the left to cool the colors (adding blues), or to the right to warm the colors (adding reds).

Vignette:

Provides the ability to darken the edges of the image, in a circular shape.

Grain per pixel:

Based off of the unique Nik Grain Engine, this slider lets you add realistic grain into your photo. Move the slider to the left, decreasing the number of grain elements applied per pixel, to increase the size and visibility of grain throughout your photo. To prevent any grain from being applied to your photo, move

the slider completely to the right.

Film Strength:

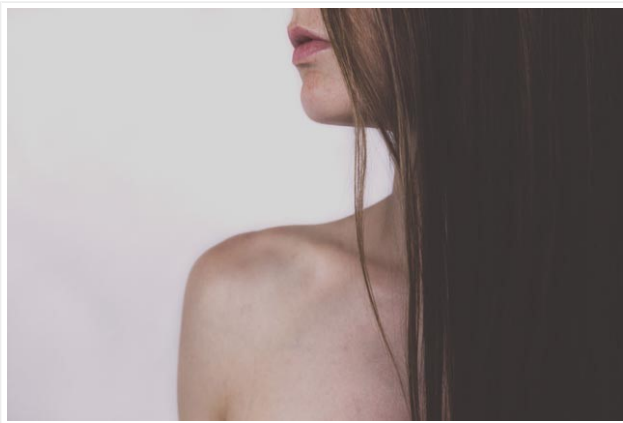
Controls the strength of the unique film stylization applied. To keep the original colors of your photo, move this slider to 0%.

Film Type:

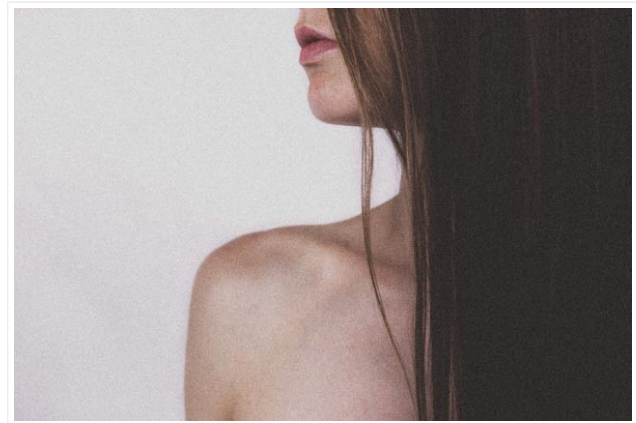
Select from a range of different film types, each designed to create a different look and feeling in your photo.

Image by Casey Allen on Unsplash

Film Grain



Before



After

Adds realistic film grain to any image.

Filter Settings Panel Description

Grain per pixel:

Based off of the unique Nik Grain Engine, this slider lets you add realistic grain into your photo. Move the slider to the left, decreasing the number of grain elements applied per pixel, to increase the size and visibility of

grain throughout your photo. To prevent any grain from being applied to your photo, move the slider completely to the right.

Grain Softness:

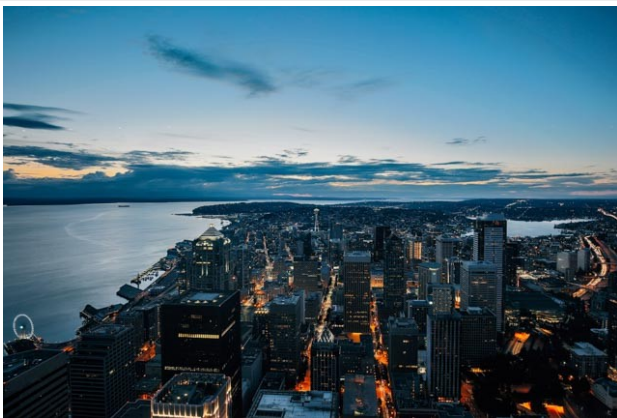
The Grain Softness slider enables you to control how hard or soft the grain appears, with harder grain providing a feeling of more detail or sharpness and softer grain providing a more natural film feeling.

Film Contrast:

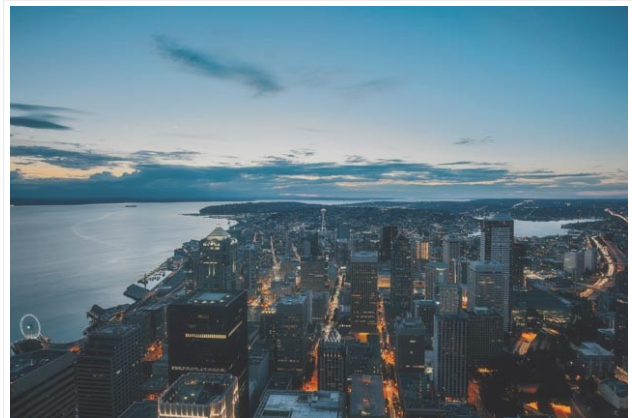
Adds a natural film-like S-curve to the image.

Image by Freestocks.org on Unsplash

Fog



Before



After

Simulates traditional fog effect: A pronounced, soft focus giving the appearance of fog.

Filter Settings Panel Description

Method:

Provides a range of different soft focusing effects.

Intensity:

Controls the degree to which you want to apply the filter.

Image by Nitish Meena on Unsplash

Foliage



Before



After

Identifies foliage and greenery in an image and enhances or stylizes those objects.

Filter Settings Panel Description

Method:

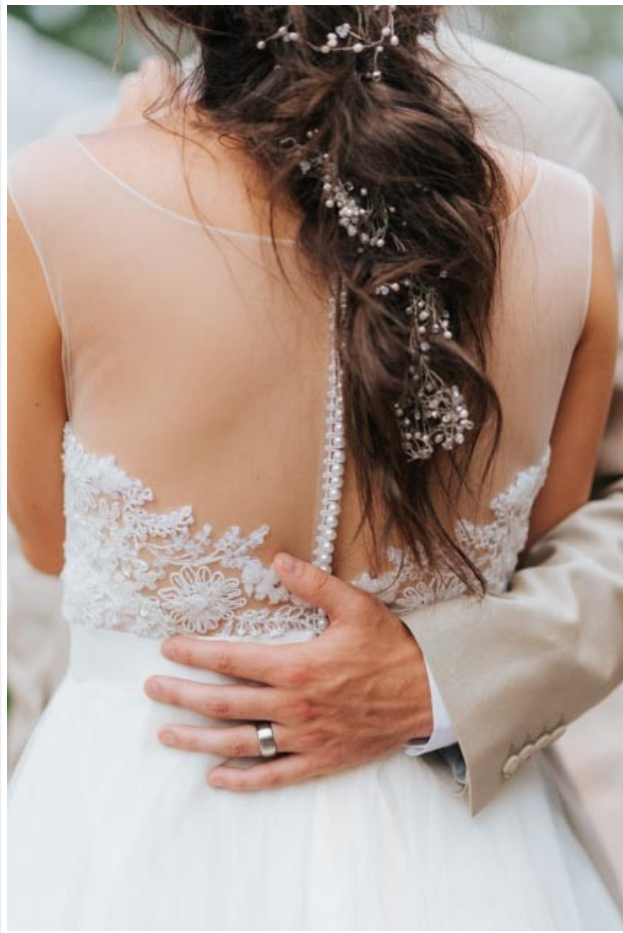
Enables you to control the color of the foliage found throughout your photo.

Enhance Foliage:

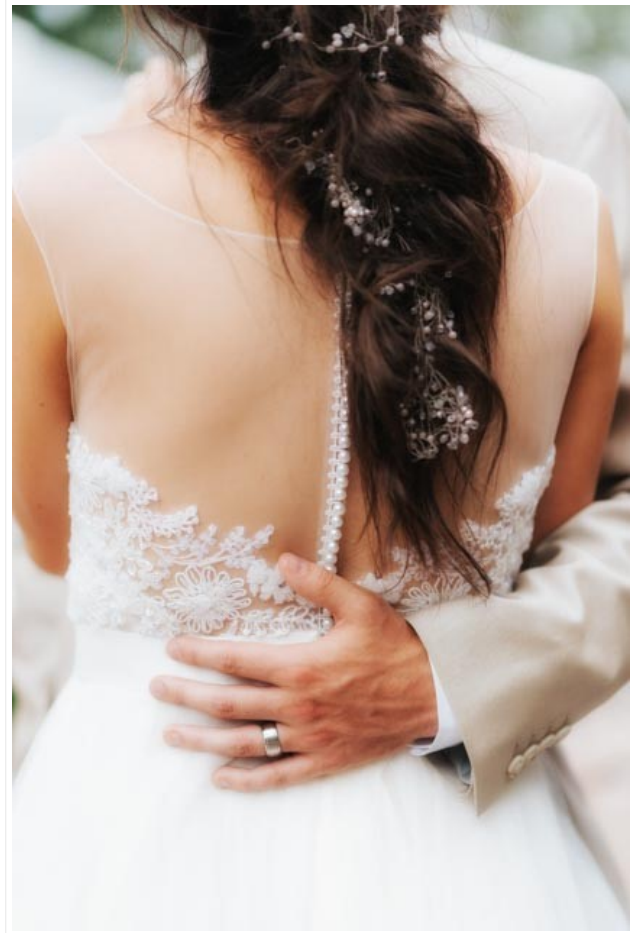
Controls the degree to which you want to apply the filter.

Image by Phil Goodwin on Unsplash

Glamour Glow



Before



After

Gives portrait photographers a powerful way to stylize images with dreamy, soft effects.

Filter Settings Panel Description

Glow:

Controls the degree of the filter's softening technique.

Brightness:

Controls the overall brightness of your photo.

Glow Temperature:

Controls the temperature of the effect added to the image. Moving this slider to the left creates a cool blue effect, while moving this slider to the right creates a warm red-orange effect.

Image by Josh Applegate on Unsplash

Graduated Filters



Before



After

Simulates the use of a traditional glass graduated filter, blending a color into one half of your photo.

Filter Settings Panel Description

Color Set:

Select one of 16 pre-set color combinations, grouped into four different color sets.

Opacity:

Controls the overall strength of the filter.

Blend:

Controls the transition between the filter and the original photo.

Vertical Shift:

Controls the placement of the filter's horizon.

Rotation:

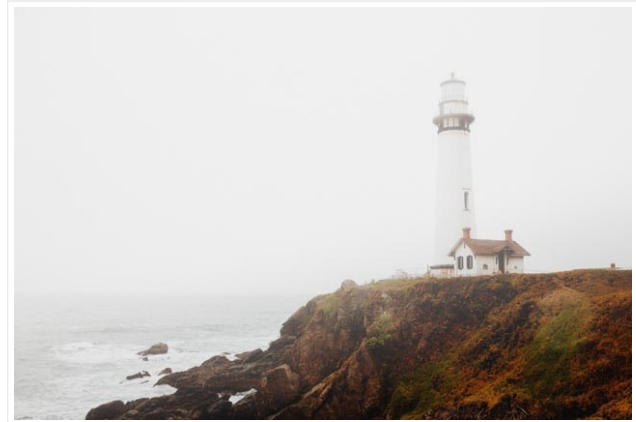
Controls the angle of the filter's horizon.

Image by DesignCue on Unsplash

Graduated Fog



Before



After

Simulates the traditional glass filter and enables you to add a strong softening effect to one half of your photo.

Filter Settings Panel Description

Fog Method:

Provides a range of different soft focusing effects.

Opacity:

Controls the overall strength of the filter.

Blend:

Controls the transition between the filter and the original photo.

Vertical Shift:

Controls the placement of the filter's horizon.

Rotation:

Controls the angle of the filter's horizon.

Image by Andrew Charney on Unsplash

Graduated Neutral Density



Before



After

Darkens or lightens a portion of an image while preserving the color of the image. Use this filter to help correct the tonality of an image with too much contrast.

Filter Settings Panel Description

Upper Tonality:

Controls the brightness of the top portion of the filter.

Lower Tonality:

Controls the brightness of the bottom portion of the filter.

Vertical Shift:

Controls the placement of the filter's horizon.

Rotation:

Controls the angle of the filter's horizon.

Blend:

Controls the size of the blend between the fog effect and the original image details.

Image by Gary Bendig on Unsplash

Graduated User Defined



Before



After

Simulates the use of a traditional glass graduated filter, with the ability to select any color to be blended into one half of your photo.

Filter Settings Panel Description

Color:	Specifies the color to be applied to one half of your photo. Use either the eyedropper to select a color from the current image or click on the color patch to access the color picker.
Opacity:	Controls the overall strength of the filter.
Blend:	Controls the size of the blend between the selected color and the original image details.
Vertical Shift:	Controls the placement of the filter's horizon.

Rotation:

Controls the angle of the filter's horizon.

Image by Bradley Swenson on Unsplash

High Key



Before



After

Enables you to simulate the look of a high key photo, with uniformly light tones and low contrast. This filter is also helpful to enhance images that were shot as high key images.

Filter Settings Panel Description

Glow:

Controls the degree of glow added around objects from the Standard High Key effect.

Standard High Key:

Adds a high key effect uniformly to the entire image.

Dynamic High Key:

Adds a unique high key effect that changes based on the color and tonality of the original object. This control lightens darker objects more than light objects.

Saturation:

Controls the overall vibrancy of colors throughout your photo.

Blacks:

Enables you to emphasize the darkest objects in your photo and ensure some black tones are present, a crucial component in a high key image.

Contrast:

Controls the overall contrast of your photo.

Image by Jamie r. mink on Unsplash

Image Borders



Before

After

Use the Image Borders filter to add a unique, natural, and random image borders to your photos. This filter uses Nik's proprietary technologies to create image borders that are infinitely variable and yet incredibly organic.

Filter Settings Panel Description

Size:

Controls the size of the border added to the image. Tip: The image border will always remove some area from your image. To avoid cropping some part of your image while adding an image border, use a pixel editing application such as Photoshop to increase the canvas size of the image and apply a black border around the image. Then, use the Size slider to create the desired overlap of image border and black border.

Spread:

Controls the depth of the border added. Moving this slider to the right causes the image border's details to stretch farther into the image.

Clean/Rough:

Controls the random details added around the image. Moving the slider to the right (towards Rough) creates more random details to be added into the border creating a more stylistic border.

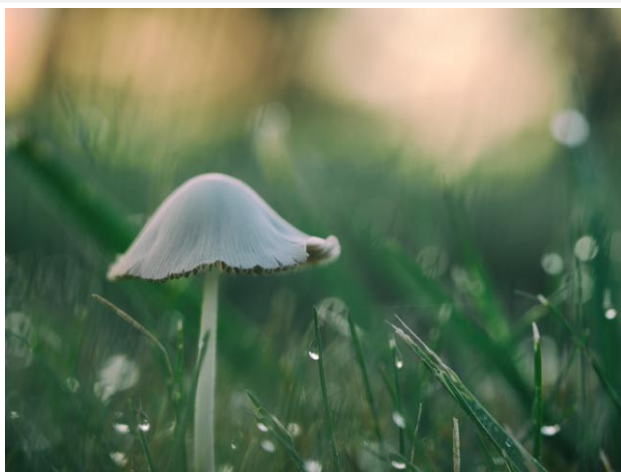
Vary Border:

Clicking on the Vary Border button randomly selects a different border seed number. This border seed number creates a different

randomized border effect for each number, providing a wide range of results. To create the exact same border each time, make sure to remark the settings for the Size, Spread, Clean/Rough, and seed number. To get a similar but different border for each image, use the same Size, Spread, and Clean/Rough values but a different seed number.

Image by 35mm on Unsplash

Indian Summer



Before



After

Identifies foliage and greenery in an image and enhances or stylizes those objects, creating warm colors similar to seasonal fall scenery.

Filter Settings Panel Description

Method:

Enables you to control the color of the foliage found throughout your photo.

Enhance Foliage:

Controls the degree to which you want to apply the filter.

Image by Aaron Burden on Unsplash

Infrared Film



Before



After

Simulates both Color and Black and White Infrared films. Use this filter to simulate different methods of capturing the infrared portion of the electromagnetic radiation spectrum, and the effects produced by films that can capture those wavelengths.

Filter Settings Panel Description

Method:

Selects either Color or Black and white infrared film types with different styles for both types.

Lighten Highlights:

Controls the luminosity of the highlights within your photo.

Brightness:

Controls the overall brightness of your photo.

Contrast:

Controls the overall contrast of your photo.

Image by Christian Joudrey on Unsplash

Ink



Before



After

Simulates the stylistic effect of special photographic papers and toners.

Filter Settings Panel Description

Color Set:

Select from a wide range of different color combinations.

Strength:

Controls the degree to which you want to apply the filter.

Image by Julian Paul on Unsplash

Levels & Curves



Before



After

Levels and Curves are some of the most often used tools to adjust brightness and tonality in an image. This filter is especially useful when combined with other filters in a stack.

Filter Settings Panel Description

Channel:

Enables you to select which channel to adjust the tonality of. In addition to the RGB, Red, Green, and Blue channels typically provided in a Curve dialog, the Levels & Curves filter also provides a Luminosity channel, making it possible to adjust the brightness and contrast of your photo without affecting the colors.

Opacity:

Controls the degree to which the filter is

added to your photo.

Tone Curve:

Click to add anchor points to the curve directly. Double-click on an anchor point to remove that point.

Image by Ray Hennessy on Unsplash

Low Key



Before



After

Enables you to simulate the look of a low key photo, with uniformly dark tones and low contrast. This filter is also helpful to enhance images that were shot as low key images.

Filter Settings Panel Description

Glow:

Controls the degree of glow added around objects from the Standard Low Key effect.

Standard Low Key:

Adds a low key effect uniformly to the entire image.

Dynamic Low Key:

Adds a unique low key effect that changes based on the color and tonality of the original

object. This control darkens lighter objects more than dark objects.

Saturation:

Controls the overall vibrancy of colors throughout your photo.

Whites:

Enables you to emphasize the lightest objects in your photo and ensure some white tones are present, a crucial component in a low key image.

Contrast:

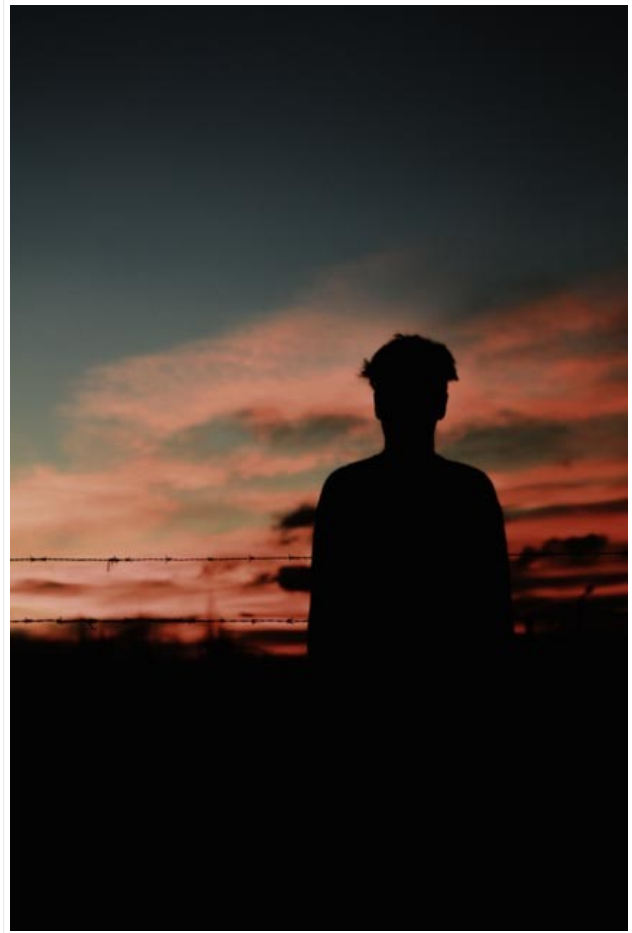
Controls the overall contrast of your photo.

Image by Scott Webb on Unsplash

Midnight



Before



After

Creates the illusion of a photograph taken at night with a dark, moody feeling. Use the Midnight filter to create a cinematic effect, softening details throughout the image with an intelligent soft-focus technique.

Filter Settings Panel Description

Method:

Use this pull-down menu to select from one of the pre-defined color combinations.

Blur:

Controls the amount of soft focus added for a stylistic effect.

Contrast:

Controls the overall contrast of your photo.

Brightness:

Controls the overall brightness of your photo.

Color:

Controls the relationship between the amount of color added by the filter and the amount of color to include from the original photo.

Image by Facundo Aranda on Unsplash

Monday Morning



Before



After

Introduces a diffused, cool, and somewhat sleepy mood to your photo. Use this filter to control contrast and saturation, add grain, and apply a soft focus effect.

Filter Settings Panel Description

Method:

Use this pull-down menu to select from one of the pre-defined color combinations.

Grain:

Controls the amount of grain added to the image.

Brightness:

Controls the overall brightness of your photo.

Smear:

Controls the degree of the filter's softening technique.

Color:

Controls the relationship between the amount of color added by the filter and the amount of color to include from the original photo.

Image by Alejandro Escamilla on Unsplash

Old Photo



Before



After

Transforms an image to resemble an old photograph, with styles to simulate various black and white and color processes.

Filter Settings Panel Description

Style:

Select from black and white or color, each with six different styles to choose from.

Grain:

Controls the amount of grain added to the image.

Brightness:

Controls the overall lightness of the image.

Image by Igor Ovsyannykov on Unsplash

Paper Toner



Before



After

Simulates the different types of toners typically used on black and white prints in darkrooms. Use this filter to automatically convert an image into a black and white version before adding the toner effect; for best results and more control, use the B/W Conversion filter first.

Filter Settings Panel Description

Paper Tone:

Use the pull-down menu to select from one of the pre-defined toners to apply to your photo.

Strength:

Controls the degree to which you want to apply the filter.

Texture:

Adds a unique paper texture to your photo.

Image by M. Zonderling on Unsplash

Pastel



Before



After

Lightens and softens an image for a smooth, stylistic effect, resulting in a subdued and desaturated image.

Filter Settings Panel Description

Method:

Use the pull-down menu to select a pre-defined pastel effect.

Diffusion:

Controls the amount of detail smooth applied to your photo.

Saturation:

Controls the overall vibrancy of the colors throughout your photo.

Contrast:

Controls the overall contrast of your photo.

Image by 2Photo Pots on Unsplash

Photo Stylizer



Before



After

Use this filter to transform an otherwise plain or ordinary image to a more stylized and desirable one.

Filter Settings Panel Description

Style:

From the pull-down menu, select one of the color sets available.

Strength:

Controls the degree to which you want to apply the filter.

Brightness:

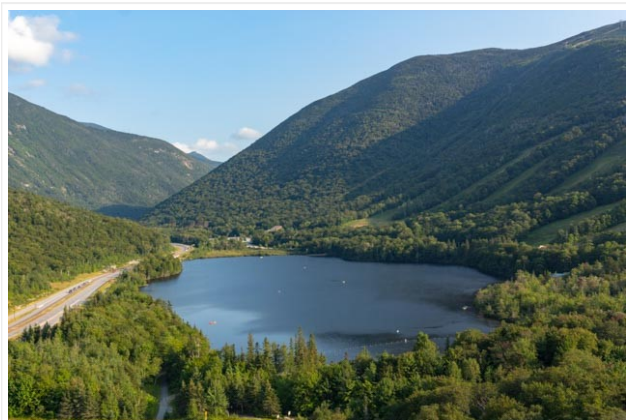
Controls the overall brightness of your photo.

Warmth:

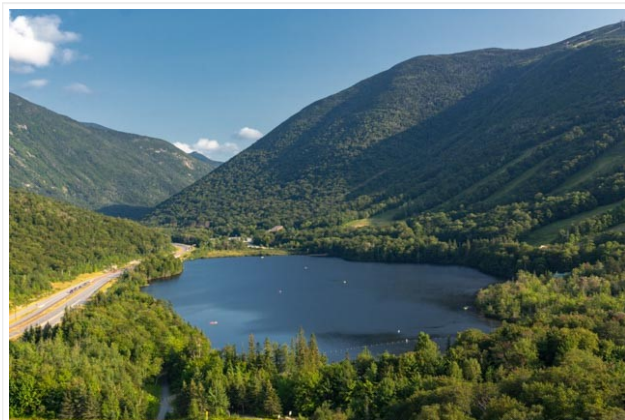
Controls the temperature of the colors in your photo. Move the slider to the left to cool the colors (adding blues), or to the right to warm the colors (adding reds).

Image by Jay Ruzesky on Unsplash

Polarization



Before



After

Simulates the traditional glass polarization, or PL, filter. Use this filter to enhance blue skies while increasing the contrast throughout the rest of the image.

Filter Settings Panel Description

Rotate:

Simulates the effect of rotating the filter in front of your lens, and the different color contrasts that this produces.

Strength:

Controls the degree to which you want to apply the filter.

Image by Matt Collamer on Unsplash

Polaroid Transfer



Before



After

Simulates the effect of using Polaroid peel-apart films and transferring the nascent image to paper before it has fully developed. The result is a low-contrast, low-saturation version of the image, with subtle shifts to the colors throughout the image.

Filter Settings Panel Description

Border:

Adds a textured border around the image. When the slider is set to 0, the full image is displayed.

Texture:

Controls the addition of paper texture to the image.

Outer Color:

Adds elements of the original image back to the border area. The higher the value of this slider, the more of the color of the original image that is added to areas created by use of the Border slider.

Saturation:

Controls the amount of the original image's colors that are retained.

Smear:

Controls the degree of the filter's softening

technique.

Tear Off:

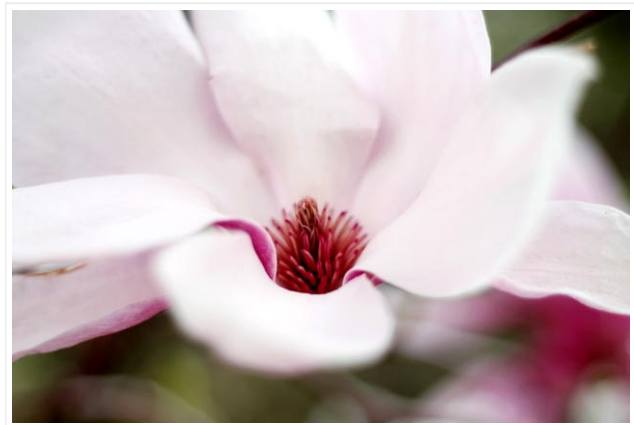
Simulates the effect of portions of the image tearing off during the transfer process. Move this slider to 0 to prevent any details from being removed from the image.

Image by Joey Huang on Unsplash

Pro Contrast



Before



After

Provides advanced control over the color and contrast of an image by analyzing each image and creating a unique enhancement specific for that image. Use this filter to introduce higher levels of contrast while maintaining detail throughout the image.

Filter Settings Panel Description

Correct Color Cast:

Controls the reduction of a color cast that the filter automatically identifies in the image.

Correct Contrast:

Increases the contrast in the image according to the distribution of light and tonality.

Dynamic Contrast:

Adjusts the contrast of each object throughout the image based on the distribution of tonality found in the image. This unique control automatically adjusts different areas to varying degrees.

Image by Blair Connolly on Unsplash

Reflector Efex



Before



After

Simulates traditional photographic reflects to open up shadows and control light in the image.

Filter Settings Panel Description

Method:

Select from Gold, Soft Gold, or Silver. Gold and Soft Gold add a warming and slightly warming light to the shadows respectively. Silver adds neutral light into the shadows.

Light Intensity:

Controls the amount of light the reflector adds to the image.

Light Falloff:

Controls how abruptly the effect trails off.

Position:

Controls where the falloff begins.

Source Direction:

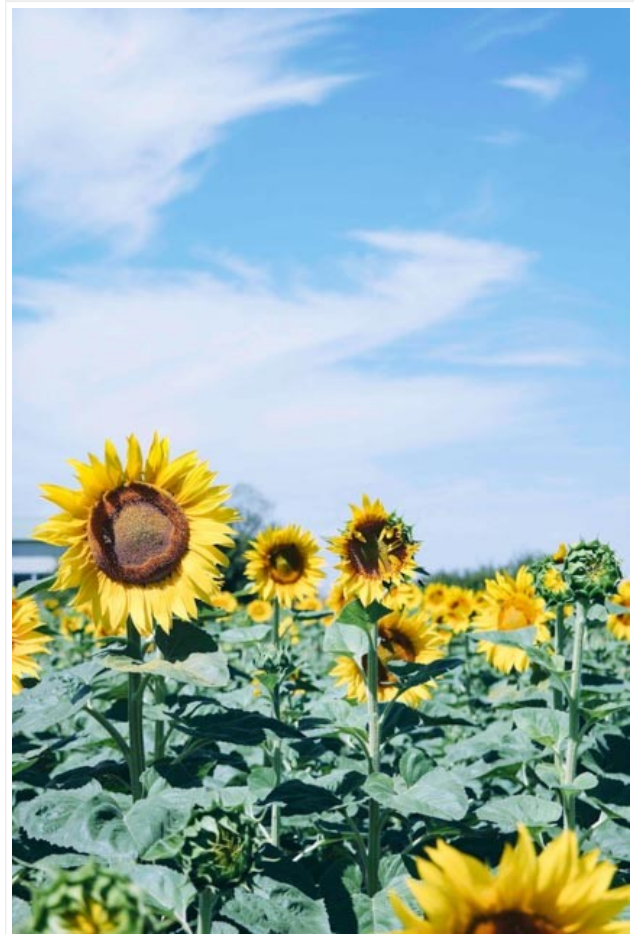
Specifies the point at which the reflector effect begins.

Image by Will Oey on Unsplash

Remove Color Cast



Before



After

Removes colorcasts quickly and effectively from your photo.

Filter Settings Panel Description

Color: Specifies the colorcast to remove from the image. Move the slider until the selected color matches the predominant colorcast in your photo.

Strength: Controls the amount of the colorcast to remove.

Image by Brigitte Tohm on Unsplash

Skylight Filter



Before



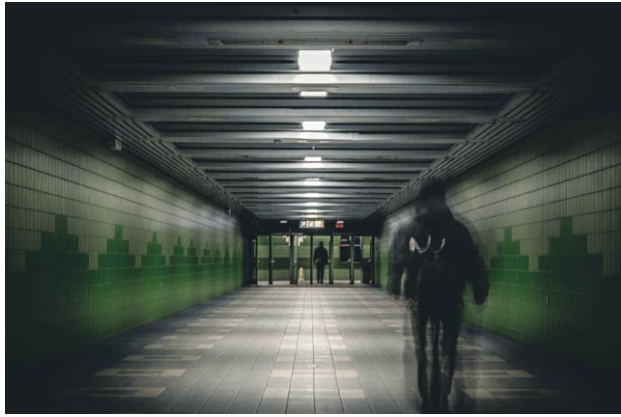
After

Simulates glass warming filters. Use this filter remove blue casts while applying an intelligent warming effect to colors throughout your photo.

Filter Settings Panel Description

Strength: Controls the degree of the warming effect to add to your photo.

Solarization



Before



After

Simulates the Sabatier (more often referred to as solarization) darkroom process. Use this filter to create a stylistic effect in which some tones and colors are reversed.

Filter Settings Panel Description

Method:

Use this pull-down menu to select the type of solarization applied to the image, with a number of different styles for both color and black and white effects.

Saturation:

In the color methods, this slider controls the vibrancy of colors throughout your photo. In the black and white methods, this slider controls the saturation of the image prior to the black and white conversion, which adjusts the contrast of the resulting photo.

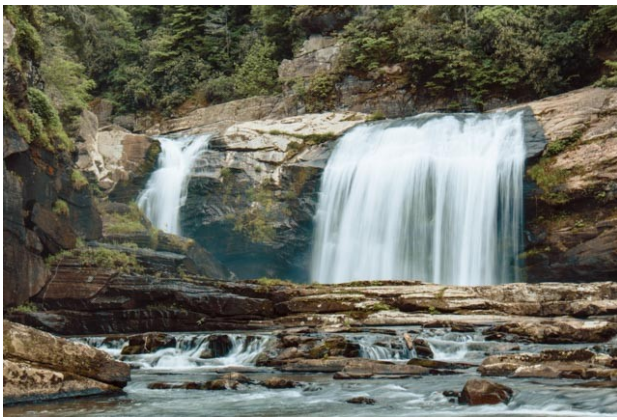
Elapsed Time:

Adjusts the effect in a similar way that

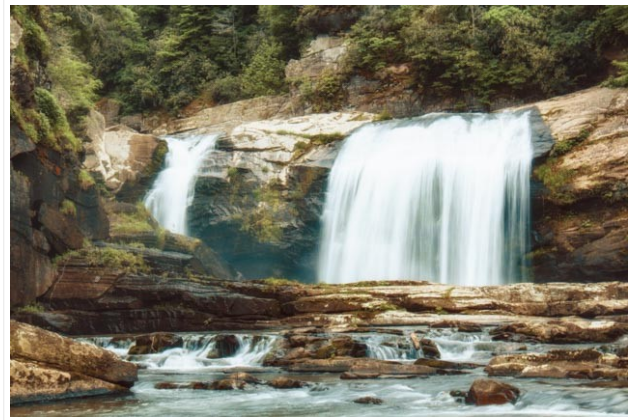
photographers in the darkroom would create different results by varying the amount of time in the developer before re-exposing their image.

Image by Aleksandar Savic on Unsplash

Sunlight



Before



After

A newly re-imagined version of the Sunshine filter, the Sunlight filter adds light and warmth into any image. Use this filter to make any image look like it was taken on a warm, sunny day.

Filter Settings Panel Description

Light Strength:

Controls the amount of light added into the shadows of the image. Reduce the slider to create a high contrast photo or increase this slider to provide warm light into the entire photo.

Light Temperature:

Controls the temperature of the light added into the image. Move to the left to increase the warmth of the light or to the right to

reduce the warmth, making the light cooler.

Brightness:

Controls the overall brightness of your photo.

Contrast:

Controls the overall contrast of your photo.

Saturation:

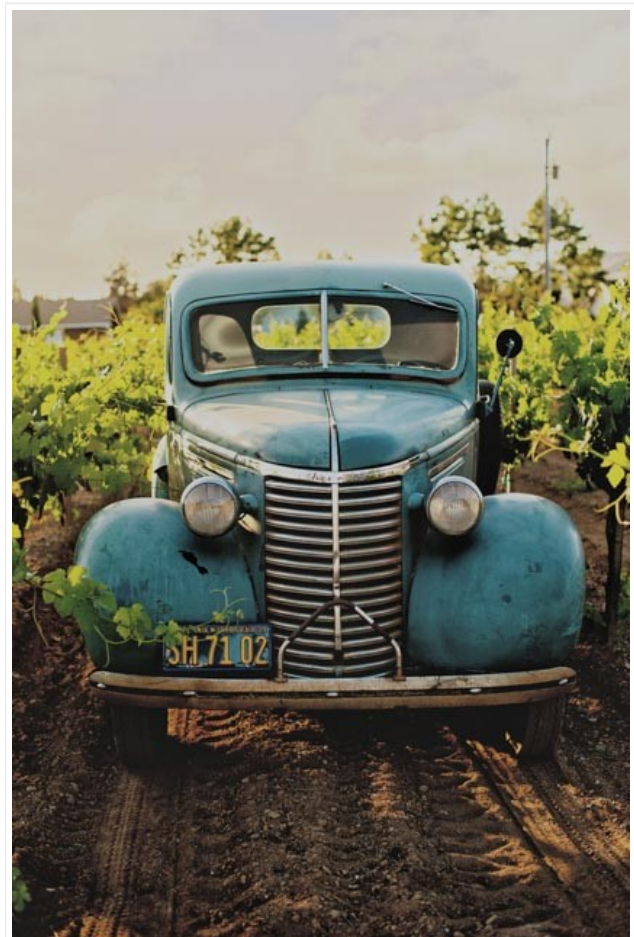
Controls the vibrancy of colors throughout your photo.

Image by Gabe Hobbs on Unsplash

Tonal Contrast



Before



After

This filter provides powerful control over the textures and details found throughout your photo.

Filter Settings Panel Description

Contrast Type:

Use this pull-down menu to select how the Tonal Contrast filter will affect the details throughout your image.

Highlights:

Controls the amount of contrast added to the highlights of your photo.

Midtones:

Controls the amount of contrast added to the midtones of your photo.

Shadows:

Controls the amount of contrast added to the shadows of your photo.

Saturation:

Controls the vibrancy of colors throughout your photo.

Image by Cayton Heath on Unsplash

Vignette



Before



After

Simulates the application of a vignette in the darkroom.

Filter Settings Panel Description

Vignette Color:	Lets you select the color to be used for the vignette. Use the eyedropper to select a color from within your photo, or click on the color patch to access the color picker.
Shape:	Use this pull-down menu to select a circle, oval, smooth rectangle, or rough-edged rectangle as the shape of the vignette.
Adapt Edges:	Controls the relationship between the shape of the vignette and the image details. The higher the value of this slider, the more the vignette shape integrates itself into your photo.
Transition:	Controls how abruptly the vignette blends into the original image details.
Size:	Adjusts the area of the image covered by the vignette.
Opacity:	Controls the overall strength of the filter.
Place Center:	Positions the center of the vignette.

Image by Vincent van Zalinge on Unsplash

Vignette: Blur



Before



After

Defocuses detail around the center of the image, drawing the eye to the inside of the image.

Filter Settings Panel Description

Shape:

Use this pull-down menu to select either a circular, ovoid, or rectangular shape for the vignette.

Type:

Use this pull-down menu to select the type of blur added to the image.

Transition:

Controls how abruptly the vignette blends into the original image details.

Size:

Adjusts the area of the image covered by the vignette.

Opacity:

Controls the overall strength of the filter.

Place Center:

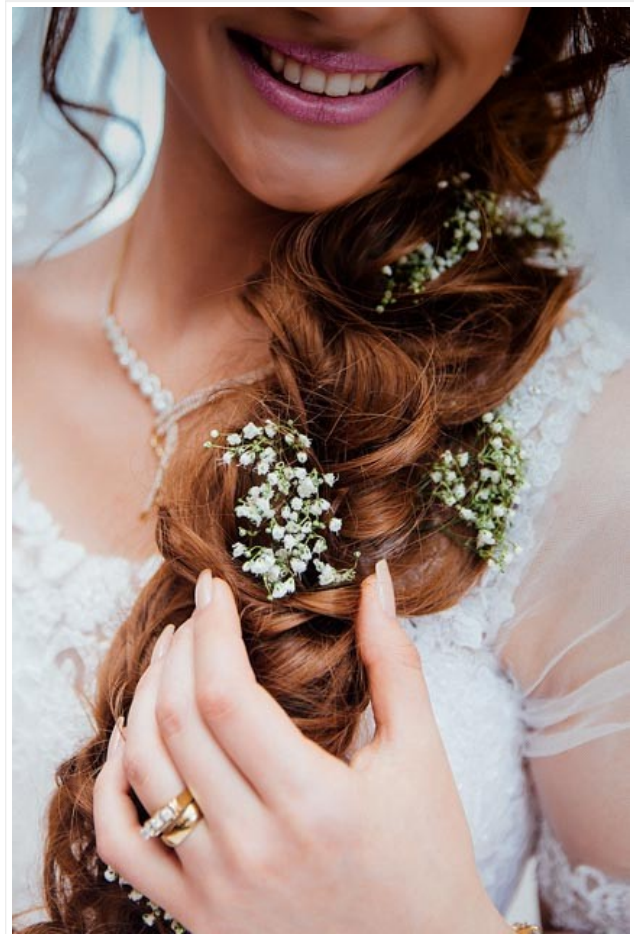
Positions the center of the vignette.

Image by Craig Whitehead on Unsplash

Vignette: Lens



Before



After

Simulates vignettes created by different types of lenses. Darkening the edge of the frame helps keep the viewer's eye within the boundaries of the image and increases the sense of depth of the

image.

Filter Settings Panel Description

Amount:

Controls the strength of the vignette. Moving this slider to the left adds a darkening vignette to the borders of the image while moving this slider to the right adds a brightening vignette.

Shape:

Controls the overall shape of the vignette between circular and rectangular.

Size:

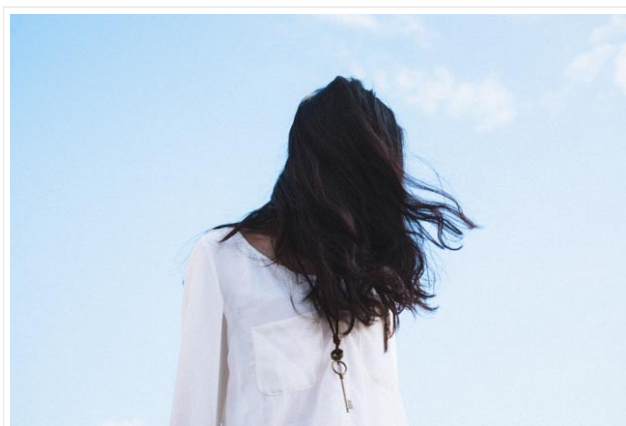
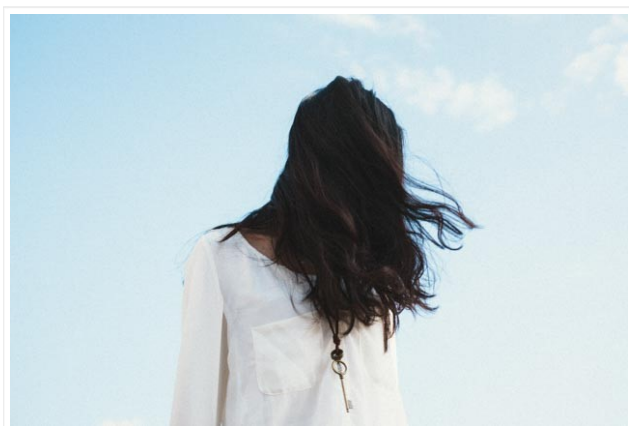
Adjusts the area of the image covered by the vignette.

Place Center Button:

Pressing the Place Center button enables you to select the center position of the vignette in the image.

Image by Alvin Mahmudov on Unsplash

White Neutralizer



Before

After

Removes color casts from light objects, such as white walls or brides' dresses. Use this filter to clean up images and create bright, crisp whites, without affecting the other colors in your photo.

Filter Settings Panel Description

Color:

Specifies the colorcast to remove from the image. Use the eyedropper to select a color from within your photo, or click on the color patch to access the color picker.

Adjust Whole Image:

Removes the color selected in the Color control from the entire image.

Neutralize Whites:

Removes the color selected in the Color control from only the bright objects in the image.

Image by F on Unsplash

RELATED ARTICLES

[Applying a filter](#)

[Silver Efx Pro 2 Tour](#)

[Color Efx Pro 4 Tour](#)

[Adding multiple filters](#)

[How to launch Nik Collection 3 by DxO and Nik Collection 2.5 by DxO plugins from Affinity Photo 1.8 \(or higher\)?](#)

Get our newsletter

Sign up

Follow us



Choose your language



OTHER SOFTWARE

DxO PhotoLab
Nik Collection
DxO FilmPack
DxO ViewPoint

CUSTOMER SUPPORT

Support
Forum
Product
Registration

COMPANY

About
Careers
Legal

STORE

Buy
Upgrade
Login

